



**BAJAJ PRINTPACK MACHINERIES  
PRIVATE LIMITED**

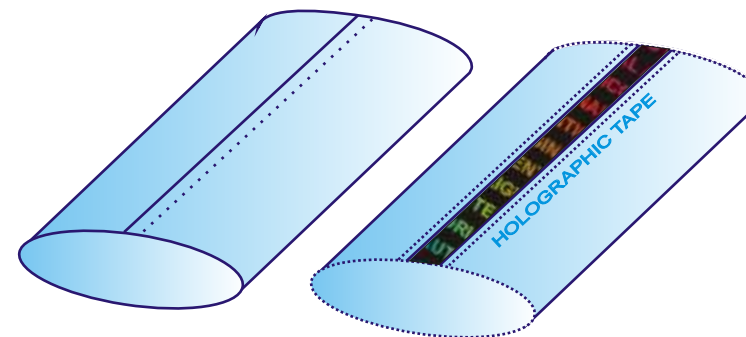
## GLUING MACHINE



BPM-GHA-500

## Technical Specifications

Model	BHI-GHA-500
Machine speed	10-200 mtr/min
Unwind roll width	500 mm (max)
Width of product	50-500 mm
Unwind roll dia.	650 mm(max)
Rewind system	Paper core 3" & 6"
Rewind roll dia.	700 mm (max)
Voltage	220 V. 2-phase. 50/60 Hz
Main motor	DC ! HP. 1 Set
Rewind motor	DC-TQ 2HP. 1 Set
Unwind tension controller	2.5 kg/m power brake 1
Blower	1/8 HP. 1 Set
Air shaft (unwind)	1 Set. 3" x 600mm
Mold plate for bag making	Flat & gusset each 1 piece
Optional accessorie	
Counter	1 set
Edge position controller	1 set
Dimension LxWxH	1.85 Mtr x 1 Mtr x 1Mtr
Weight	900 kgs.
Total power required	3 K.W 3 Phase



## SILENT FEATURES:

This machine is designed and manufactured to be ideal for producing various materials of color shrink label. It is very easy to operate and maintain. The main drive on this machine employs a DC motor, offering variable speed adjustment to suit varying types of material, adhesive flow rate, and desired working speed.

- ☀ DC main motor allows for variable speed adjustment to suit the required for a variety of material and adhesive flow rates.
- ☀ Simple construction, Easy to operate and maintain
- ☀ Magnetic powder brakes control the unwind tension
- ☀ On-line Self Adhesive Holographics / Non Holographics Tape Application in Pen Cake / Bobbin Form.
- ☀ On-line perforation



## BAJAJ PRINTPACK MACHINERIES PRIVATE LIMITED

Fac.: #182, Sec - 6, IMT Manesar, Gurgaon - 122050 HARYANA INDIA  
 Phone: 91-124-4367150 Fax: 91-124-436744  
 E-Mail: sales@bajajprintpack.com web: www.bajajprintpack.com